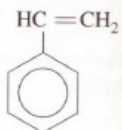
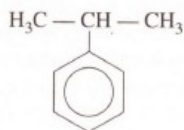


Názvosloví arenů

Monocyklické areny



1,2-dimethylbenzen
o-dimethylbenzen
o-xylen

1,3-dimethylbenzen
m-dimethylbenzen
m-xylen

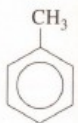
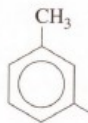
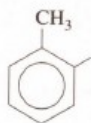
1,4-dimethylbenzen
p-dimethylbenzen
p-xylen

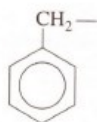
ortho- (poloha 1,2)

meta- (1,3)

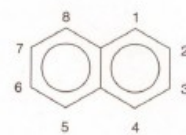
para- (1,4)

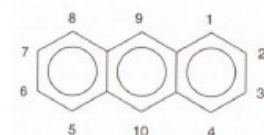
Uhlovodíkové zbytky odvozené od aromatických uhlo vodíků odtržením vodíkového atomu se označují jako arylly.

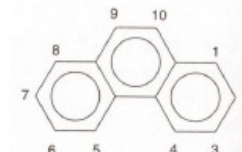


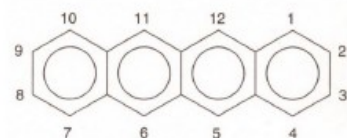


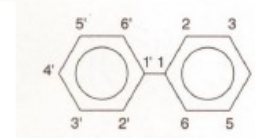
Polycyklické areny







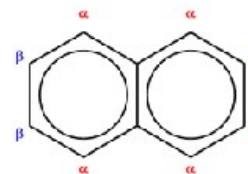




1,5-dimethylnaftalen

1,4-diethylnaftalen

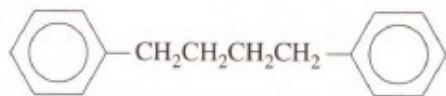
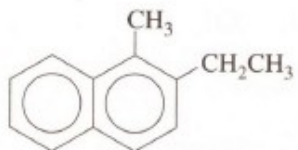
V případě naftalenu se pro vyjádření poloh 1,4,5,8 často uží vá písmeno α , zatímco polohy 2,3,6,7 se označují písmenem β .



1-naftyl
 α -naftyl

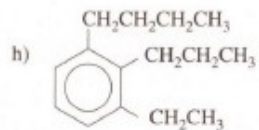
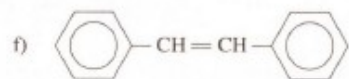
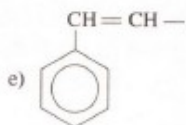
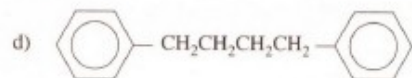
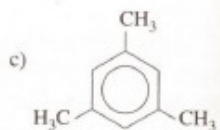
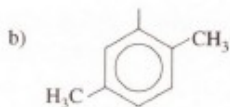
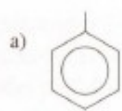
2-naftyl
 β -naftyl

2-anthryl



PŘÍKLADY K PROCVIČENÍ

1. Pojmenujte:



2. Napište vzorce:

- a) benzyl b) p-xylen
 c) o-tolyl d) 2-naftyl
 e) p-ethylfenyl
 f) 1-ethyl-2-methyl-4-propylbenzen
 g) 1,2-diethyl-3-methylbenzen
 h) 1,5-dimethylnaftalen